

**CITY OF CAPE CORAL
REQUEST FOR SOLE SOURCE/SINGLE SOURCE PURCHASE**

Requesting Department: Utilities / Water Reclamation 10/05/2023

Vendor Name: Hudson Pump & Equipment (Dominic Spears)

Address: 3524 Craftsman Boulevard, Lakeland, Florida 33803

Phone: (863) 665-7867 E-Mail: schisholm@tencarva.com

Price: \$80,000.00 (^{wrap} ~~Not to exceed budgetary limits~~)

Description of item to be procured:
Blue-White chemical metering pumps and parts for both the Everest Water Reclamation and Southwest Water Reclamation Facilities.

1.) Uniqueness of vendor's item/service: How is this vendor uniquely qualified to provide the product/service:


Hudson Pump & Equipment are the exclusive Municipal representative for Blue-White Industries Pro-Series M Peristaltic metering pumps and OEM replacement and repair parts.

2. Market Research: Describe other, similar sources or products available in the market, if any, and why they are not acceptable:

The Water Reclamation Division utilizes Blue-White Industries Pro-Series M Peristaltic metering pumps for their Sodium Hypochlorite delivery system. The Everest facility utilizes 7 M-4 pumps and 2 M-3 Pumps. The Southwest Facility utilizes 3 M-4 Pumps. Other products are available on the market that would work in place of Blue-White Industries products and will be looked at when the time comes to rehab or improve the Sodium Hypochlorite metering system at either facility. For the time being due to piping dimensions and layout, it is more cost effective to continue to utilize Blue-White Industries products and parts.

3. Proposed Actions: Describe the actions the department will take to overcome the present barriers to competition for any future acquisition of this product or service:

We will continue to stay informed of advancements in emerging and available components, processes, and equipment capable of meeting the needs of Utilities and the Community and include evaluations of different manufacturer's products as appropriate for future projects.

Department Director's Signature:  Date: 10/5/2023
acting for Jeff Pearson

Approval: Procurement Manager:  (not to exceed \$50,000) Date: 10/18/23

Approval: City Manager:  (not to exceed \$100,000.00) Date: 10/19/23

Council authorization required if exceeding \$100,000.00

MEMORANDUM

CITY OF CAPE CORAL
UTILITIES DEPARTMENT

TO: Mike Ilczyszyn, City Manager
Wanda Roop, Procurement Manager
Mark Mason, Finance Director

FROM: Jeff Pearson, Utilities Director *R.E. Acting for Jeff Pearson*

DATE: October 5, 2023

SUBJECT: Sole Source Request to Hudson Pump & Equipment.

The Utilities Department, Everest Division, and Southwest Water Reclamation Division (EWRF) (SWRF) are requesting to purchase Blue-White chemical metering pumps and OEM parts from Hudson Pump & Equipment. Purchases from the sole source vendor, Hudson Pump & Equipment shall be in an amount not to exceed \$80,000.00.

Hudson Pump & Equipment are the exclusive Municipal representative for Blue-White Industries Pro-Series M Peristaltic metering pumps and OEM replacement and repair parts.

The Water Reclamation Division utilizes Blue-White Industries Pro-Series M Peristaltic metering pumps for their Sodium Hypochlorite delivery system. The Everest facility utilizes 7 M-4 pumps and 2 M-3 Pumps. The Southwest Facility utilizes 3 M-4 Pumps. These pumps are critical to the correct operation of the City's Water Reclamation Process.

Funds have been budgeted in Fiscal Year 2023 and are available in the following Divisions:

- 400-36015-546102 – Repair and Maintenance
- 400-36015-552116 – Small Equipment
- 400-36015-564101 – Capital Equipment
- 400-36016-546102 – Repair and Maintenance
- 400-36016-552116 – Small Equipment
- 400-36016-564101 – Capital Equipment

JP:ap (Sole Source Request to Hudson Pump & Equipment.)

C: Dominic Spears, Maintenance Supervisor
Jeff Walter, Water Reclamation Manager

Blue-White **Industries, Ltd.**

5300 Business Dr., Huntington Beach, CA 92649
Phone: 714-893-8529 Fax: 714-894-9492
Email: sales@blue-white.com

September 27, 2023

Dominic Spears
City of Cape Coral
Utilities Maintenance Supervisor

RE: Sole Source Letter

Dominic,

Hudson Pump & Equipment, a division of Tencarva Machinery Company, headquartered in Lakeland, FL is the exclusive Municipal Representative for Blue-White Industries Pro-Series peristaltic and diaphragm metering pumps, skid systems, and accessories.

Hudson Pump & Equipment has been granted sole exclusivity for the promotion and sale of the Pro-Series municipal product line within the state of Florida except for the Panhandle.

Respectfully,

Rick Sparger
Southeastern Regional Manager
Blue-White Industries

ENECON[®] Corporation
*The Fluid Flow
 Systems Specialists.*

6 Platinum Court • Medford, NY 11763
 Tel: 516.349.0022 • Fax: 516.349.5522

Elizabeth Lopez
Regional Sales Director, GA-FL-PR
(305)340-7731
elizabethlopez@enecon.com

PRICE LIST
Effective February 1st, 2023
 All Prices EX-FACTORY
 Medford, NY - U.S.A.



Mechanic's Repair Kit	\$ 995.00
1 x 1 kg DurAlloy 3 x 167 gm A-Packs SpeedAlloy 1 x 250 gm SpeedAlloy QS	
Plus mixing boards, mixing knives, plastic applicators, reinforcement tape, sandpaper roll, alcohol wipes and disposable gloves . . .	
All packed in a handy tool box.	
	+ \$60 Shipping



Leak Repair Kit	\$ 575.00
2 x 167 gm A-Packs SpeedAlloy 1 x 250 gm SpeedAlloy QS	
Plus mixing boards, mixing knives, plastic applicators, reinforcement tape, sandpaper roll, alcohol wipes and disposable gloves . . .	
All packed in a handy tool box.	
	+ \$60 Shipping

METALCLAD Systems

Engineer's Repair Kit (1kg DurAlloy, 2 A-packs SpeedAlloy, 1x250gm QS, 1x250gm ER) YETI BUCKET	\$1165.00
	+ \$70 Shipping

Product	Packaging & Description	Price
METALCLAD DurAlloy Machinable Trowelable	4 x 1 kg. complete kits per case	\$ 910.00
	Industrial Economy Pack 12 x 1 kg. units per case	\$ 2,280.00
Metal repair paste – (SHAFTS) 15 Min working life @ 86°	1 x 5 kg. complete pack	\$ 800.00
DurAlloy MIL 200gm APacks – 12xAPacks		\$795.00
SpeedAlloy MIL 125gm APacks – 12xAPacks		\$690.00

METALCLAD Systems (continued)

METALCLAD SpeedAlloy 12 x 167 gm. A-Packs per case \$ 740.00
Fast curing repair systems

3 Min working life @ 86°

METALCLAD SpeedAlloy QS 6 x 250 gm. kits per case \$ 480.00
 Leak plug paste
 45 Seconds working life @ 86°

METALCLAD CeramAlloy CP+ [AC] 4 x 1 kg. complete kits per case \$ 920.00
Advanced Composite

Erosion / corrosion protection Industrial Economy Pack ... \$ 2,300.00
Trowelable 12 x 1 kg. units per case

Metal repair paste used to rebuild blades, veins & create high-build cladding on tube sheet faces
 40 Min working life @ 86°

METALCLAD CeramAlloy CL+ [AC] 4 x 1 kg. complete kits per case \$ 990.00
 Available in two colors ... Blue & Gray

Advanced Composite
Erosion / corrosion protection Industrial Economy Pack ... \$ 2,550.00
Brushable liquid 12 x 1 kg. units per case
 Available in two colors ... Blue & Gray

Liquid Ceramic coating – pumps & tube sheets
 40 Min working life @ 86°

METALCLAD CeramAlloy HTP 4 x 1 kg. complete kits per case \$ 990.00
High Temperature Service Conditions

Erosion / corrosion protection Industrial Economy Pack ... \$ 2,460.00
Trowelable 12 x 1 kg. units per case

Metal repair paste – HIGH TEMP
 DRY UP TO 520° WET UP TO 330°

METALCLAD CeramAlloy HTL 4 x 1 kg. complete kits per case \$ 1,130.00
 Available in two colors ... Light Brown & Dark Brown

High Temperature Service Conditions
Erosion / corrosion protection Industrial Economy Pack ... \$ 2,775.00
Brushable liquid 12 x 1 kg. units per case
 Available in two colors ... Light Brown & Dark Brown

HIGH TEMP – Ceramic Liquid Coating
 DRY UP TO 520° WET UP TO 330°

METALCLAD Systems (continued)

METALCLAD CeramAlloy CP+ D.B.A. Tested ... ASTM 3911-89 Erosion / corrosion protection Trowelable For Nuclear applications	4 x 1 kg. complete kits per case ----- Industrial Economy Pack ... 12 x 1 kg. units per case	\$ 1,060.00 ----- \$ 2,475.00
METALCLAD CeramAlloy CL+ D.B.A. Tested ... ASTM 3911-89 Erosion / corrosion protection Brushable liquid For Nuclear applications	4 x 1 kg. complete kits per case Available in two colors ... Blue & Gray ----- Industrial Economy Pack ... 12 x 1 kg. units per case Available in two colors ... Blue & Gray	\$ 1,185.00 ----- \$ 2,700.00
METALCLAD CeramAlloy CBX	1 x 5 kg. complete kit (with Primer)	\$ 525.00
Extraordinary abrasion resistance High build-up Trowelable	NOTE: Special pricing by the skid-load (40 x 5 kg. kits) (\$496 per 5 kg. kit price)	\$19,840.00
3 different sizes of ceramic spheres Plus silicon carbide	1 x 20 kg. Industrial unit (NO Primer) ----- NOTE: Special pricing by the skid-load (18 x 20 kg. units) (\$1,650 per 20 kg. industrial unit price)	\$ 1,715.00 ----- \$ 29,700.00
METALCLAD CeramAlloy EBX	1 x 5 kg. complete kit (with Primer)	\$ 410.00
Economical abrasion resistance High build-up Trowelable	NOTE: Special pricing by the skid-load (40 x 5 kg. kits) (\$360 per 5 kg. kit price)	\$ 14,400.00
Silicon Carbide	1 x 20 kg. Industrial unit (NO Primer) ----- NOTE: Special pricing by the skid-load (18 x 20 kg. units) (\$1,260 per 20 kg. industrial unit price)	\$ 1,395.00 ----- \$ 22,680.00
METALCLAD DuraWrap Carbon Fiber Pipe Wrap System	18 Square Foot System, containing . . . DuraWrap Primer - 2 x 1 kg units DuraWrap Polymer - 2 x 750 gm units Carbon Fiber - 1 roll (3 inch x 150 feet)	\$ 2,395.00 ----- + \$115 Shipping
Extend service life of aging piping and structural components	37 Square Foot System, containing . . . DuraWrap Primer - 4 x 1 kg units DuraWrap Polymer - 4 x 750 gm units Carbon Fiber - 1 roll (6 inch x 150 feet)	\$ 4,450.00 ----- + \$175 Shipping
Tensile Strength: 123,600psi Adhesion to steel: >3500psi	75 Square Foot System, containing . . . DuraWrap Primer - 8 x 1 kg units DuraWrap Polymer - 8 x 750 gm units Carbon Fiber - 1 roll (12 inch x 150 feet)	\$ 8,995.00 ----- + \$310 Shipping

DuraWrap Systems (continued)

Individual DuraWrap system components available separately	<i>DuraWrap Primer - 4 x 1 kg units</i>	\$ 1,000.00
	<i>DuraWrap Polymer - 4 x 750 gm units</i>	\$ 690.00
	<i>Carbon Fiber 3 inch x 150 foot roll</i>	\$ 1,550.00
	<i>Carbon Fiber 6 inch x 150 foot roll</i>	\$ 2,760.00
	<i>Carbon Fiber 12 inch x 150 foot roll</i>	\$ 5,615.00

FLEXICLAD Systems

FLEXICLAD DuraTough DP Elasto-ceramic composite Cavitation resistant Trowelable Used on rudders of large ships	Paste	<i>4 x 500 gm. complete kits per case</i> <i>Includes 4 DuraTough Primer A Packs</i>	\$ 970.00
		<i>Industrial Economy Pack ...</i> <i>12 x 500 gm. units per case</i> <i>Includes 12 DuraTough Primer A Packs</i>	\$ 2,510.00

FLEXICLAD DuraTough DL Elasto-ceramic composite Cavitation resistant Brushable liquid	Liquid	<i>Surfacing & Protection System ...</i> <i>4 x 500 gm. complete kits (Blue)</i> <i>4 x 500 gm. complete kits (Green)</i> <i>4 x DuraTough Primer A Packs</i>	\$ 1,700.00
		<i>Industrial Economy System ...</i> <i>12 x 500 gm. units (Blue)</i> <i>12 x 500 gm. units (Green)</i> <i>12 x DuraTough Primer A Packs</i>	\$ 4,400.00

FLEXICLAD DuraTough Primer	<i>10 x A-Packs of DuraTough Primer</i>	\$ 865.00
-----------------------------------	---	-----------

FLEXICLAD ER Repair flexible seals & Repairs to flexible components Trowelable NO PRIMER REQUIRED	Conveyor belts	<i>4 x 250 gm. complete kits per case</i>	\$ 500.00
		<i>Industrial Economy Pack ...</i> <i>12 x 250 gm. units per case</i>	\$ 1,280.00

FLEXICLAD PC Trowelable, Paste-grade Caulk For vertical & overhead surfaces NO PRIMER REQUIRED		<i>4 x 500 gm. complete kits per case</i>	\$ 715.00
		<i>Industrial Economy Pack ...</i> <i>12 x 500 gm. units per case</i>	\$ 1,815.00

FLEXICLAD LC Brushable, Liquid-grade Caulk For horizontal surfaces NO PRIMER REQUIRED		<i>4 x 500 gm. complete kits per case</i>	\$ 730.00
		<i>Industrial Economy Pack ...</i> <i>12 x 500 gm. units per case</i>	\$ 1,860.00

ENECRETE Systems DuraQuartz yields 400 cubic inches – If crack is 1" deep and ½" wide, you can repair 800 linear inches or 67 linear feet.

ENECRETE DuraQuartz Extraordinary concrete repair and rebuilding system Compressive Strength: 15,500psi Adhesion to steel: 1900psi 30 Min working life @ 86°	1 x 15 kg. complete system Includes Primer, Resins & Quartzite Aggregate	\$ 470.00
	NOTE: Special pricing by the skid-load (18 x 15 kg.) (\$385 per 15 kg. system price)	\$ 6,930.00

ENECRETE DuraQuartz LW Extraordinary Light Weight concrete repair and rebuilding system for vertical and overhead surfaces Repair walls - Compressive Strength: 5000psi	1 x 5 kg. complete system Includes Primer, Resins & Light Weight Quartzite Aggregate	\$ 470.00
	NOTE: Special pricing by the skid-load (18 x 5 kg.) (\$385 per 5 kg. system price)	\$ 6,930.00

ENECRETE DuraQuartz RR Rapid Repair concrete repair and rebuilding system Cures too fast for South Florida	1 x 5 kg. complete system Includes Resins & Aggregate	\$ 240.00
	NOTE: Special pricing by the skid-load (40 x 5 kg.) (\$210 per 5 kg. system price)	\$ 8,400.00

ENECRETE WP Super fast water plug Stops leaks in seconds	1 x 15 kg. complete kit Includes Powder, Mixing Pails, Spatulas, Applicators & Gloves	\$ 360.00
	NOTE: Special pricing by the skid-load (18 x 15 kg.) (\$310 per 15 kg. kit price)	\$ 5,580.00

ENECRETE WS Water sealer Waterproofing Polymer modified cement coating	1 x 15 kg. complete system Includes Powder & Polymer Liquid Activator	\$ 360.00
	NOTE: Special pricing by the skid-load (18 x 15 kg.) (\$310 per 15 kg. system price)	\$ 5,580.00

ENECRETE DuraFill Mix with locally available aggregates for: - bulk fill applications - broadcast flooring applications	1 x 60 kg. "resins only" system each system consists of 2 x 5 gal. buckets of Base resin & 1x5 gal. bucket of Activator Resin	\$ 2,860.00
	Special Offer: Buy 6 and Save -- \$2,800.00 each!!	

Resin Only: Yields 3350 Cubic Inches or 23.25 Sq. Ft. @ 1" thick
 Resin mixed with 5 times the volume of fine clean play sand: Yields 15,000 Cubic Inches or 104 Sq. Ft. @ 1" thick.
 Broadcast floors: Double Roll/Single throw – Yields approximately 500 Sq. Ft.
 COMPRESSIVE STRENGTH: 10,000PSI
 Adhesion to steel: 3000psi

ENESEAL Systems

ENESEAL HR Heat refraction Roof Membrane Insulation protection Weather proofing Takes of 20% of heat/temperature Yields 500 Sq. Ft. per coat Flexible moisture resistant barrier, 2-yr shelf life	1 x 15 ltr. Bucket Color: White	\$ 480.00
	NOTE: Special pricing by the skid-load (18 x 15 ltr.) (\$390 per 15 ltr. bucket price)	\$ 7,020.00
	NOTE: Super special large quantity pricing (50 x 15 ltr.) (\$365 per 15 ltr. bucket price)	\$ 18,250.00

ENESEAL CR UV resistant Corrosion resistant Surface tolerant	1 x 20 kg. bucket Available in four standard colors ... Light Gray, White, Green & Brown	\$ 585.00
Rust inhibitor, elastomeric acrylic Weather resistant but allows water Vapor transmission, 3-yr shelf life Yields 500 Sq. Ft. per coat	NOTE: Special pricing by the skid-load (18 x 20 kg.) (\$555 per 20 kg. bucket price)	\$ 9,990.00
	NOTE: Super special large quantity pricing (50 x 20 kg.) (\$487.50 per 20 kg. bucket price)	\$ 24,375.00
	1 x 8 kg. plastic pail Color: Safety Yellow	\$ 365.00

ENESEAL MP UV Resistant Clear Masonry Penetrant Penetrating Sealant for Weather Proofing	1 x 20 kg. bucket	\$ 265.00
"scotch guard" your concrete/masonry against moisture	NOTE: Special pricing by the skid-load (18 x 20 kg.) (\$215 per 20 kg. bucket price)	\$ 3,870.00

ENESEAL MP / HS UV Resistant Clear Masonry Penetrant Specifically for Horizontal Surfaces	1 x 20 kg. bucket	\$ 765.00
	NOTE: Special pricing by the skid-load (18 x 20 kg.) (\$620 per 20 kg. bucket price)	\$ 11,160.00

CHEMCLAD Systems

CHEMCLAD SC Chemical / corrosion resistant protection system	4 x 750 gm. complete kits per case (3 kilos) 1 x 7 kg. complete pack Available in three standard colors ... Gray, Haze Gray & White For yield, figure 45 Sq. Ft. per kilo per coat	\$ 435.00 \$ 740.00
NSF approved for use with potable water	NOTE: Special pricing by the skid-load 36 x 7 kg. complete packs (\$640 per 7 kg. pack price)	\$ 23,040.00
High gloss finish Adhesion: steel: 2300psi (NSF) Aluminum: 1700psi Copper: 2200psi Stainless Steel: 2500psi	12 x 20 kg. units (non-stock / special order only) (\$552.25 per 7 kg. pack price equivalent)	\$ 18,900.00

CHEMCLAD Systems (continued)

CHEMCLAD GP General Purpose Chemical / corrosion resistant protection system	4 x 750 gm. complete kits per case (3 kilos) 1 x 7 kg. complete pack Available in four standard colors ... Tan, Gray, Haze Gray & White For yield, figure 45 Sq. Ft. per kilo per coat	\$ 435.00 \$ 760.00
High gloss finish Adhesion: steel: 3600psi Aluminum: 2600psi Copper: 2300psi Stainless Steel: 3300psi	NOTE: Special pricing by the skid-load 36 x 7 kg. complete packs (\$690 per 7 kg. pack price)	\$ 24,840.00
	12 x 20 kg. units (non-stock / special order only) (\$568.75 per 7 kg. pack price equivalent)	\$ 19,500.00
	SAFETY YELLOW 4 x 750 gm. complete kits per case	\$ 500.00

<p>CHEMCLAD XC Extreme Chemicals Extraordinary chemical resistance High gloss finish Can withstand 98% Sulfuric Acid! Adhesion: steel: 2900psi Aluminum: 2400psi Copper: 2500psi Stainless Steel: 2700psi</p>	<p>4 x 750 gm. complete kits per case (3 kilos) \$ 760.00 1 x 7 kg. complete pack \$ 1,285.00 Available in three standard colors ... Dark Gray, Light Gray & White For yield, figure 25 Sq. Ft. per kilo per coat</p>
	<p>NOTE: Special pricing by the skid-load 36 x 7 kg. complete packs \$ 39,960.00 (\$1,110 per 7 kg. pack price)</p>

<p>CHEMCLAD P4C Primer</p>	<p>1 x 6 kg. complete pack \$ 610.00 Primer for unsealed concrete surfaces</p>
<p>Yields: 400 Sq. Ft. Only need 1 coat</p>	<p>NOTE: Special pricing by the skid-load 36 x 6 kg. complete packs \$ 20,790.00 (\$577.50 per 6 kg. pack price)</p>

ENECLAD Systems

<p>ENECLAD FPS Floor Protection System Yield: 160 Sq. Ft. – If using primer, P4C Can apply just one heavy coat. High gloss finish, add anti-skid additive For texture & slip resistance</p>	<p>1 x 7 kg. complete pack \$ 605.00 Available in two colors ... Haze Gray & Tile Red</p>
<p>100% Solids Very Durable Roller Applied No Odors</p>	<p>NOTE: Special pricing by the skid-load (36 x 7 kg.) \$ 18,000.00 (\$500 per 7 kg. pack price)</p> <p>APPROX. COVERAGE RATE: 175 square feet per 7 kg. pack. ENECLAD FPS is designed to be applied as a <u>one coat</u> system over P4C if required. Approximate single coat thickness =12 mils. NOTE: Use CHEMCLAD P4C to prime new or unsealed concrete.</p>

ENECLAD SuperBond

<p>Ultra high performance structural adhesive and universal bonding agent</p>	<p>12 x 1 kg. complete pack \$ 1,200.00 1 x 7 kg. complete pack \$ 600.00</p>
<p>Create DuraGrip Slip resistant stripes 1kg – 2" wide stripe x 120 linear feet Bond with aluminum oxide to create traction</p>	<p>NOTE: Special pricing for quantity purchases (12 x 7 kg.) \$ 6,450.00 (\$537.50 per 7 kg. pack price)</p> <p>APPROX. COVERAGE RATE: 40 – 45 square feet per 1 kg. pack. ENECLAD SuperBond exhibits extraordinary adhesion to concrete, stone, terrazzo, marble, etc. and serves as an excellent "bond coat" for difficult surfaces like galvanizing, glazed ceramic tile and even glass.</p>
<p>100% Solids Brush / Roller Applied No Odors</p>	

ENECLAD CFS Clear Floor Sealer	1 x 6 kg. complete pack	\$ 585.00
---	-------------------------	-----------

Yield: 700 Sq. Ft. @ a very thin coat of
3 mils thick per coat.

*NOTE: Special pricing by the skid-load (24 x 6 kg.) \$ 11,760.00
(\$490 per 6 kg. pack price)*

100% Solids
No Odors
Roller Applied

NOTE: ENECLAD CFS is primarily intended to be used as a dust-proofing sealer on concrete. Coverage rates, therefore, are virtually impossible to pre-determine since it is a function of the porosity and surface profile of the concrete. A coverage test is always recommended prior to quoting on any project since very porous and/or rough concrete will significantly affect coverage rates. Practical field experience has shown that a coverage rate of approximately 750 square feet per unit per coat is obtainable on a smooth, well prepared concrete warehouse floor.

ENECLAD SPS Self-priming screed for smoothing rough concrete before applying ENECLAD FPS or CHEMCLAD	1 x 20 kg. complete system each system consists of 6.5 kg. of modified DuraQuartz Resins, 13.5 kg. of DuraQuartz Aggregate and a 5 gal mixing pail	\$ 775.00
---	--	-----------

*NOTE: Special pricing by the skid-load (9 x 20 kg.) \$ 5,985.00
(\$665 per 20 kg. pack price)*

100% Solids
No Odors
Squeegee Applied

NOTE: ENECLAD SPS is primarily intended to be used as a self-priming floor screed on spalled / rough concrete in order to create a smoother surface prior to the application of the ENECLAD FPS. Since surface texture or roughness of the concrete will dramatically affect the coverage rate, it is impossible to predict practical coverage rates. As a guide, one 20 kg. system should cover an area of approximately 100 - 150 sq. ft. on moderately rough / spalled concrete surfaces.

1 x 6 kg. complete pack

ENECLAD WBC Water-based, breathable cladding for concrete and wood surfaces	1 x 6 kg. complete pack	\$ 470.00
--	-------------------------	-----------

Resists blistering due to
Hydrostatic pressure issues

*NOTE: Special pricing by the skid-load (36 x 6 kg.) \$ 14,760.00
(\$410 per 6 kg. pack price)*

Roller Applied
No Odor

NOTE: ENECLAD WBC is primarily intended to be used as a floor coating when a matte (rather than gloss) finish is desired and in those situations where some moisture may be present at the time of the application.

ENECLAD UVR	1 x 4 kg. complete pack – Clear, Tan, Gray, Haze Gray, White	\$ 360.00
--------------------	--	-----------

UV Resistant 2-part coating – strong smell
Yield: 200 Sq. Ft. per coat per 4kg
Shipping: \$60 - UPS

1 x 4kg Compl pack – Safety Yellow or special order color \$ 395.00

World leaders in advanced polymer technology

ENECON



www.enecon.com

Solutions for Erosion, Corrosion, Cavitation, Wear and Chemical Attack Problems on:

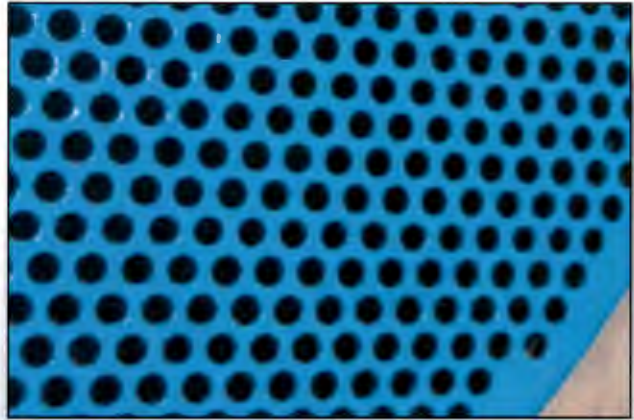
pipes • pumps • impellers • valves • tanks • condensers • heat exchangers • tube sheets • water boxes • chillers • absorbers • shafts • hydraulic rams • FGD systems • scrubbers • centrifuges • cooling towers • containment dikes • troughs • spillways • propellers • kort nozzles • bow thrusters • rudders • struts • hull fairing

A recognized world leader in developing advanced polymer technologies, **ENECON[®] Corporation** has pioneered unique coating systems for industries including: the U.S. Navy, the petrochemical industry and electrical utilities. These extraordinary polymer systems are the result of years of research and development work that began with the first epoxy slip-resistant deck coatings approved by the U.S. Navy and the first products approved to the Department of Defense Specification C-24176 for hull fairing / smoothing.

The senior management of **ENECON[®]** have many years of combined practical experience in

troubleshooting industrial fluid flow problems. They have worked closely in the past with such diverse and prestigious organizations as the Panama Canal, Army Corps of Engineers, United States Navy, nuclear and fossil fuel power stations, pulp and paper mills, petrochemical plants, mining and quarrying operations, food processing facilities, pharmaceutical companies, etc.

ENECON[®] is strategically positioned to provide industry, utilities and institutions with the finest repair and protection products and services available. **ENECON[®]**, therefore, is the name to call when fluid flow problems are costing you time, money and aggravation.



ENECON products are manufactured under an ISO 9001 Registered Quality Management System.



METALCLAD®

The most advanced metal repair & protection systems available

Wherever erosion, corrosion, wear or chemical attack create problems in fluid flow systems, METALCLAD® polymer composites provide the ultimate solution.

ENECON® researchers have combined the latest and safest polymer technology with unrivaled fluid flow systems engineering know-how to produce the most advanced polymer systems available for rebuilding, resurfacing and protecting virtually all fluid flow components as well as plant structures.

METALCLAD® systems exhibit outstanding compressive and flexural strengths as well as phenomenal adhesion. Their ability to cure at low temperatures, provide superb chemical resistance and non-shrink properties make METALCLAD® the obvious choice for the maintenance engineering professional.

METALCLAD® repair and protection systems offer incredible savings over conventional repair or replacement procedures.

SpeedAlloy® & SpeedAlloy® QS

Leak Repair Polymer Composites

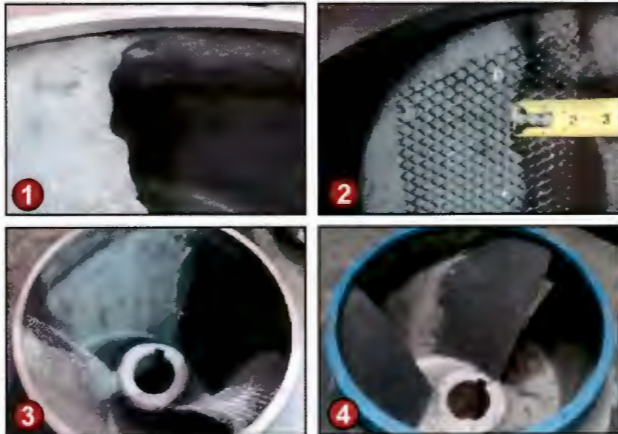


The "leak stopper!"

Fast, easy, non-slump; can be used to repair just about any leak in minutes. Ideal for pipes, tanks, sumps, casings, radiators, fuel tanks, etc. Bonds to virtually any rigid surface!

CeramAlloy® CP+AC

Erosion / Corrosion Resistant Repair & Rebuilding Polymer Composite



Outstanding erosion resistance. Trowelable system for repairing and rebuilding metal damaged by erosion and corrosion: on pumps, valves, heat exchangers, tube sheets, water boxes, etc.

CeramAlloy® CBX & EBX

Abrasion Resistant Polymer Composites



Repair & protect all types of equipment subject to very aggressive abrasion. Engineered to repair deeply damaged components.

DurAlloy®

Repair & Rebuilding Polymer Composite / Fully Machinable



Multi-purpose; can be drilled, tapped, turned on a lathe, sanded and polished. Can be used to repair worn shafts, cracked casings and engine blocks, stripped threads, sloppy keyways, scored hydraulic rams, oversize bearing / bush housings, etc.

CeramAlloy® CL+AC

Erosion / Corrosion Resistant Resurfacing Polymer Composite



The ultimate resurfacing system for protecting fluid flow equipment. Brushable, self-leveling, castable: for pumps, valves, water boxes, tube sheets, tanks, propellers, kort nozzles, bow thrusters, rudders, struts, etc.

METALCLAD[®]...

The most advanced metal repair & protection systems available

CeramAlloy[®] HTP & HTL

High Temperature Resistant Repair, Rebuilding and Resurfacing Polymer Composites

To combat the problems caused by corrosive environments on equipment accelerated by elevated operating temperatures, ENECON[®] has developed specialized versions of its CeramAlloy that can withstand elevated temperatures in immersed service and under dry conditions.

These materials, **CeramAlloy[®] HTP** and **CeramAlloy[®] HTL** can be used to repair and rebuild localized damage as well as coat and protect entire components from future damage.

CeramAlloy[®] HTP is a two component, 100% solids polymer composite specifically formulated to rebuild and repair all types of fluid flow equipment that may be subject to elevated temperatures.

CeramAlloy[®] HTL is a two component, 100% solids, liquid polymer composite used for repairing, resurfacing and coating both damaged and new components to provide outstanding erosion and corrosion resistance at elevated temperatures.

Repair & rebuild all types of equipment, outstanding erosion/corrosion resistance - even at elevated temperatures!



DuraWrap[®]

Carbon Fiber, Polymer Composite Pipe Wrap System

METALCLAD[®] DuraWrap[®] polymer / carbon fiber reinforced composite makes repairing and rebuilding aging, often severely deteriorated piping, tanks and other fluid flow equipment possible.

The ENECON[®] **DuraWrap[®]** composite, a unique marriage of ENECON[®]'s high performance polymers and cutting-edge carbon fiber technology, was specifically created to repair, rebuild, reinforce and even restore the integrity of such fluid flow systems - thereby greatly extending service life and eliminating the need for expensive replacement.

DuraWrap[®] can be applied to the interior and / or exterior of piping and equipment to both seal and strengthen these components. When applied to the interior walls of underground or otherwise inaccessible piping, **DuraWrap[®]** can effectively repair and restore pipe integrity without expensive excavation and replacement.

The outstanding performance of the ENECON[®] **DuraWrap[®]** system allows today's maintenance professional to extend the service life of yesterday's equipment and structures.

Repair, reclaim, reinforce & extend the life of all types of metal & concrete pipes & tanks.



FLEXICLAD[®]...

Extraordinary, super resilient polymer systems specifically developed for cavitation problems

DuraTough[™] DP & DL

Cavitation Resistant Repair, Rebuilding & Resurfacing Elastomeric Polymer Composites

Whether it's pump impellers or ship propellers, cavitation damage to metal is a never ending problem — and one that presented very few repair options to the maintenance engineer in the past. But now, FLEXICLAD[®] DuraTough[™] systems provide exceptional protection to equipment prone to cavitation attack and subsequent damage. Super tough, super resilient and cost effective.

FLEXICLAD[®] DuraTough[™] DP is a two component, 100% solids elasto-ceramic polymer composite specifically formulated to rebuild equipment prone to cavitation attack and subsequent damage.

FLEXICLAD[®] DuraTough[™] DL is a two component, 100% solids, fluid consistency elasto-ceramic polymer composite specifically formulated to resurface and protect equipment subject to cavitation and accelerated erosion / corrosion.

Superior strength, durability and adhesion with flexibility, abrasion resistance and elongation.



FLEXICLAD[®] ER

Elastomeric Repair & Resurfacing Polymer Composite

FLEXICLAD[®] ER is a two component, 100% solids, trowelable polymer composite that has been specifically formulated to repair damaged flexible components such as conveyor belts, hoses, expansion joints, etc.

- **Conveyor Belts**
- **Hoses**
- **Resilient Bonding of Metals, Woods, etc.**
- **Creating / Repairing Flexible Seals, Gaskets & Seats**
- **Expansion Bellows**
- **Damaged Sidewalls on Off-Road Tires**



FLEXICLAD[®] PC & LC

Elastomeric Expansion Joint Compounds

FLEXICLAD[®] PC is a two component, 100% solids, trowelable elastomeric polymer composite that has been specifically formulated to seal vertical expansion joints in concrete as well as other cementitious / mineral substrates including: tiles, brick, slate, stone, etc. It also bonds very well to metal and wood surfaces.

FLEXICLAD[®] LC is a two component, 100% solids, pourable elastomeric polymer composite that has been specifically formulated to seal expansion joints in concrete as well as other cementitious / mineral substrates including: tiles, brick, slate, stone, etc. It also bonds very well to metal and wood surfaces.

- **Secondary Containment Areas**
- **Loading Docks**
- **Patios**
- **Roof Decks**



CHEMCLAD[®]...

The ultimate in chemical protection systems

ENECON[®]'s CHEMCLAD[®] systems are the finest chemical resistant claddings available resistant to a wide variety of organic and inorganic acids, alcohols, alkalis, esters, ethers, hydrocarbons, halogenated hydrocarbons, ketones, oils, salts, etc.,

They are revolutionary polymer composites that can be easily and safely applied by brush, roller, squeegee or airless spray - even in confined spaces.

For Metal...

pipes, tanks, pumps, valves, fume hoods, drains, heat exchangers, etc.

For Concrete...

containment dikes, troughs, spillways, process areas, etc.

CHEMCLAD[®] GP

General Purpose High Performance Polymer Composite Coating System For Industrial / Commercial Applications In Standard Chemical Environments



CHEMCLAD[®] GP - a two component, 100% solids, high performance, general purpose polymer system used for creating an outstanding corrosion and chemical resistant protective coating on all types of equipment and structures.

CHEMCLAD[®] SC NSF
NSF Approved - Protects All Types Of Surfaces In Potable Water Applications

Approved For Potable Water!



CHEMCLAD[®] SC - a two component, 100% solids, polymer system that creates an outstanding corrosion and chemical resistant protective coating on all types of potable water equipment and structures.



CHEMCLAD[®] GP is simple to use. It mixes easily and can be applied by brush, roller or airless spray. It is available in different colors to simplify overcoating. This high gloss coating yields a surface that's not only functional, but also aesthetically pleasing.

CHEMCLAD[®] XC

Outstanding Polymer Composite Coating System For Extraordinary Chemical Environments



CHEMCLAD[®] XC is a two component, 100% solids, ultra high performance, chemical resistant coating that provides unrivaled protection in some of the toughest chemical environments.

ENECRETE[®]...

The finest concrete repair & protection systems available



The **ENECRETE[®]** family of products covers a wide range of repair and protection products specifically designed to tackle some of the toughest concrete problems. Including: wear, impact and abrasion problems as well as hydrostatic pressure situations.

ENECRETE[®] materials exhibit extraordinary adhesion to existing concrete as well as most other masonry substrates including: brick, tile, stone, terrazzo, etc.

Whether the problem is on floors, walls, secondary containment areas, leaking basements, elevator pits or any other concrete structure, there is an **ENECRETE[®]** material that can help solve your toughest repair and protection issues.

- **Extraordinary Adhesion**
- **Outstanding Compressive Strength**
- **100% Solids**
- **Safe & Simple To Use**

DuraFill[®]

Filling Deep Holes & Broadcast Floors



A two-component, 100% solids, polymer system specifically designed for broadcast flooring applications and filling deeper holes and cavities in concrete when combined with locally sourced aggregates.

DuraQuartz[®]

Concrete Repair Polymer Composite



A three-component, 100% solids, concrete repair compound specifically formulated and precisely engineered to provide solutions to the most difficult concrete repair and protection problems. **DuraQuartz LW** is a light weight aggregate version for vertical and overhead surfaces

DuraQuartz[®] RR

Rapid Concrete Repair Polymer Composite



A three-component, 100% solids, concrete repair composite specifically formulated and precisely engineered to provide solutions to concrete repair problems that require a quick return-to-service repair.

ENECRETE[®] WP

Hydrostatic Resistant Composite For Stopping Active Water Leaks



A cementitious, one component, extremely fast-setting product with the ability to stop running water through masonry structures. It is designed to be mixed with water and to set within one minute.

ENECRETE[®] WS

Hydrostatic Resistant Composite For Sealing Damp Walls & Floors



A protective and waterproofing product for masonry structures. It employs a multiple curing reaction process to impart its exceptional properties for waterproofing, chemical resistance and adhesion.

ENESEAL®

For weather & waterproofing problem areas on all types of roofs - plus unrivaled heat refraction properties

ENESEAL® HR

Solar Heat Reflective / Weather Resistant Flexible Coating



ENESEAL® HR is a single component, water based, liquid ceramic-filled membrane which cures to a durable, seamless, flexible 'skin' that refracts and reflects heat while providing a moisture resistant barrier to virtually any type of surface.



ENESEAL® HR is easily applied by brush, roller or spray. Because it's water based, cleanup is quick and easy with soap and water. Completely non-toxic and non-flammable. It can provide many years of weatherproofing protection to just about any type of roof.

ENESEAL® CR

Surface Tolerant / Corrosion Resistant Flexible Coating



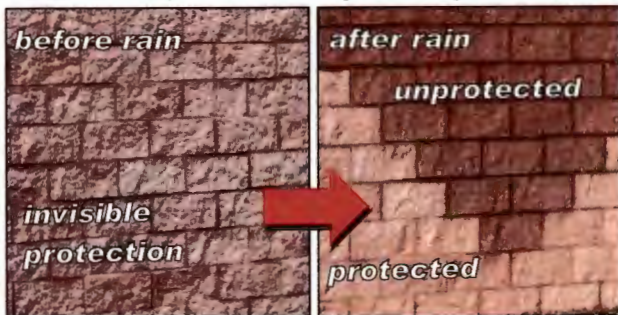
ENESEAL® CR is a single component, water based, liquid coating which dries to a highly durable, corrosion resistant, elastomeric 'skin' that provides extraordinary environmental protection to metal and concrete / masonry surfaces.



ENESEAL® CR is a 'surface tolerant' coating system that does not require abrasive blasting. It exhibits excellent adhesion to all types of ferrous metal as well as galvanized surfaces. Mechanical wire brushing, grinding or high pressure water blasting is typically acceptable to achieve good adhesion.

ENESEAL® MP

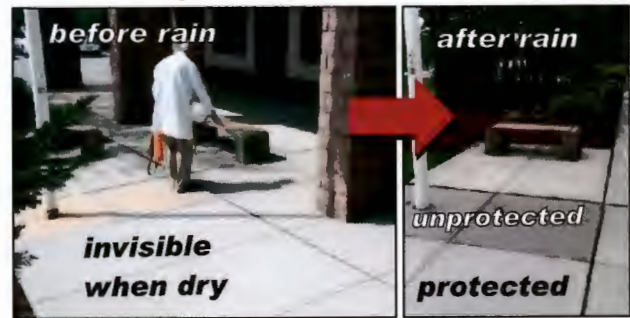
Weather Resistant, Concrete / Masonry Penetrating Sealer



ENESEAL® MP is a single component, water-based, ultra-low viscosity weather barrier which dries to an invisible, water repellent masonry sealer. It provides extraordinary weather protection to virtually all types of concrete, masonry and mineral surfaces.

ENESEAL® MP/HS

Concrete / Masonry Penetrating Sealer for Horizontal Surfaces



ENESEAL® MP/HS is specially formulated to provide long-term protection on horizontal surfaces.

ENECLAD®...

Rugged & reliable high-performance protection - the ultimate floor protection system



Easy to apply **ENECLAD®** seals and strengthens concrete floors. These high performance polymer composites are extremely abrasion resistant, making them ideal for heavy traffic areas in warehouses, hangars, loading docks, etc. They jacket the surface in a rugged coating that resists forklift traffic, oil, gasoline and most industrial chemicals.

ENECLAD® systems are solvent-free, odor-free, 100% solids, multi-component products specifically developed to solve the toughest industrial floor protection problems. They are easily applied by brush, roller or squeegee to a super high-gloss finish. Non-skid aggregates can be incorporated into the **ENECLAD®** systems to provide a highly durable, slip-resistant surface.

ENECLAD® systems can also be used to repair and level damaged concrete surfaces, making them suitable for our extended line of **ENECLAD®** high-gloss topcoats.

ENECLAD® FPS

High Performance Floor Protection System



This extraordinary high performance polymer composite is extremely abrasion resistant, making it ideal for heavy traffic areas in warehouses, hangars, loading docks, etc.

ENECLAD® CFS

High Performance Clear Floor Sealer



A two-component, 100% solids, clear concrete sealer that is virtually odor-free and has no V.O.C.'s. It has been specifically formulated to provide outstanding sealing and dust-proofing for all types of cement and mineral substrates.

ENECLAD® SPS

High Performance Polymer Composite Self Priming Screed System



A three-component, 100% solids, concrete primer / sealer that is specifically formulated to smooth-out rough concrete surfaces in order to improve the appearance of **ENECON®** top-coats such as **ENECLAD® FPS** or **CHEMCLAD®**.

ENECLAD® WBC

Breathable, High Performance Floor Protection



A two component, water-based, breathable coating system specifically designed to seal and protect concrete surfaces that may experience moisture problems. It resists blistering due to hydrostatic pressure and bonds to virtually any mineral / cement substrate as well as wood.

ENECLAD[®]...

Ultra high-performance structural adhesive & universal surface bonding agent

ENECLAD[®] SuperBond[™]

High Performance Structural Adhesive & Bonding Agent

A revolutionary structural adhesive that provides unrivaled performance when bonding a new concrete overlay to an existing, cured concrete surface or when bonding synthetic/plastic mortars to virtually any rigid surface. When used to bond new concrete to old, the strength of the resultant bond is many times greater than the cohesive strength of monolithic concrete!

ENECLAD[®] SuperBond[™] is a 100% solids, two-component, high performance polymer composite exhibiting extraordinary adhesion to smooth concrete, tile, stone, brick, block, terrazzo, marble, metal, wood and even glass! SuperBond[™] is great for improving the adhesion of conventional caulking materials used in expansion and control joints.

SuperBond[™] can even be used as a bonding agent for permanent immersion applications such as in swimming pools or on ships' hulls. It cures chemically, transforming the bond-line into a highly durable, waterproof film.



Bonds to Problem Materials:

- Galvanized Surfaces
 - Glazed Ceramic Tile
 - Glass
 - Stainless & Aluminum
- ...and more

SAFETYCLAD[®]...

Create the finest slip-resistant surfaces for the most critical environments

DuraGrip[®]

The Finest Slip-Resistant Surfaces For The Most Demanding Applications

Whether on metal, concrete, tile, marble, slate or terrazzo, our SAFETYCLAD[®] DuraGrip[®] systems can be tailor-made to provide the specific level of slip resistance required - from very fine to very coarse.

Our DuraGrip[®] systems utilize the finest polymer composite materials available from ENECON[®] to bond a variety of hard wearing aggregates to suit your specific requirements. You can create just about any pattern or shape that the situation demands.

So whether it's steps, walkways, tank tops, ramps, shower areas, or entire floor areas, DuraGrip[®] systems can provide the best slip-resistant surface possible.

Create the specific slip-resistant pattern you require on ramps & walkways, in bathrooms & shower areas, steps, entry ways, kitchens, heavy foot traffic areas and more.



REPAIR - DON'T REPLACE[®]

Make us a part of your repair & maintenance team

ENECON[®] Can Provide 'Industrial Strength Solutions' for All Your Repair & Maintenance Needs[™]

Let **ENECON[®] Corporation** show you how our high performance polymer composites and applications know-how can save you time, money and aggravation. We're doing it for thousands of demanding clients in over 60 countries around the world. We can provide you with commercially proven and cost effective repair solutions for your machinery, equipment and plant structures damaged by erosion, corrosion, cavitation, wear, impact, abrasion, chemicals, hydrostatic pressure, etc.



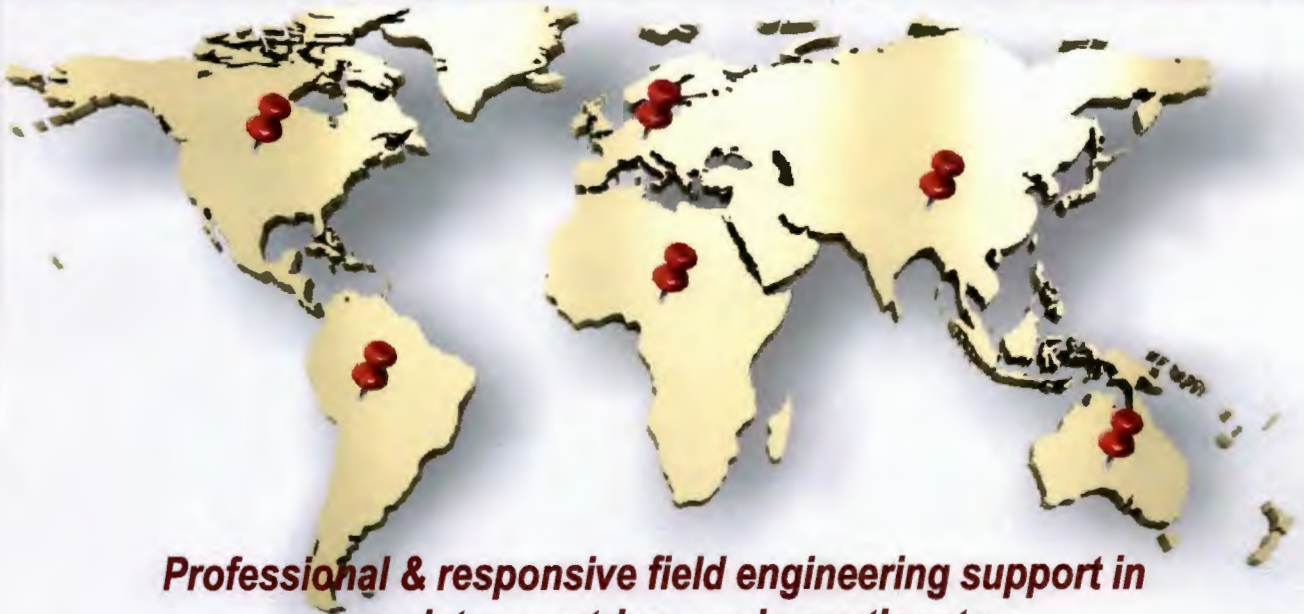
Contact us today for a free technical seminar at your facility. We will be happy to share ideas and provide some practical insights into the latest advances in high-tech polymer repair and maintenance technology.

The advice is free...the results may be priceless!



THE ENECON® INTERNATIONAL FAMILY..

There when you need us



**Professional & responsive field engineering support in
over sixty countries on six continents.**

ENECON Corporation
The Fluid Flow
Systems Specialists.
www.enecon.com

Toll Free: 888-4-ENECON (888-436-3266)

Tel: 516-349-0022 · Fax: 516-349-5522

info@enecon.com

6 Platinum Court · Medford, NY 11763-2251

@ENECONCorp



Copyright © 2022 by ENECON® Corporation. All rights reserved. No part of this work may be reproduced or used in any form or by any means - graphic, electronic or mechanical including photocopying, recording, taping or information storage and retrieval systems - without written permission of ENECON® Corporation.

Printed in the USA
March, 2022